

## GPS BASED VEHICLE TRACKING & FLEET MANAGEMENT SYSTEM



## Introduction - Track-Car

TRACK-CAR combines the installation of an electronic device in a fleet of vehicles, with purpose-designed computer software at least at one operational base to enable the owner to track the vehicle's location, collecting data in the process from the field and deliver it to the base of operation.

---

### FEATURES

---

- **Real time tracking**
- **Multiple department**
- **Multiple Users**
- **Waypoint Creation**
- **Fence Creation**
- **Running reports**



## **ADD-ON Features**

- Fuel Monitoring.
- Temperature Monitoring.
- Door Sensors.
- Over Speed Alerts.
- RFID Based Driver Identification.
- RPM & Harsh Breaking detection
- Smart synchronization with speed limiting devices.

## FLEET MANAGEMENT OPTIONS

- Daily Running
- Vehicle status
- Distance per trip
- Over speed
- Over RPM
- Harsh Braking
- Fencing & Way point
- Track playback



## FUEL MONITORING

Fuel monitoring services provides useful information about the fuel level and mileage of each vehicle. It generates various report that help in analysis from a business perspective , along with fuel level and mileage details of vehicle.

- **Mileage report**
- **Refuel report**
- **Fuel theft detection**



## TEMPERATURE MONITORING

Track-Car can be connected to various temperature sensors to detect the instability in temperature. This feature is very helpful in refrigerated containers used for transporting perishable goods.

- **Temperature rise alerts.**
- **Refrigeration on/off alerts.**



## **DRIVER EVALUATION SYSTEM (Optional)**

### **Fair evaluation of driver based on their performance.**

It will be always remain a challenge for transport companies due to lack of visibility of their operation. Track-Car driver Evaluation system gives you complete information about each driver.

#### **Analysis Based on**

- › Over speeding
- › Harsh Braking
- › Free wheeling
- › Seat belt ON/OFF
- › Route deviation



## **RFID Based Driver identification (Optional)**

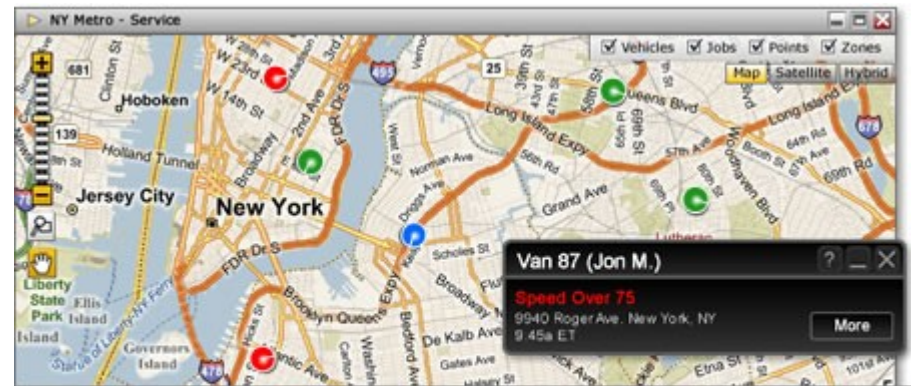
- The RFID in combination with immobilizer proves to be very effective security system for the vehicle.
- Vehicle remains immobilized unless the driver is identified.
- Reduces the chance of vehicle theft.
- Helps in identifying the person responsible in crisis situation.



## ALERTS

TRACK-CAR allows you to configure alerts for various situations. These Alerts are triggered as soon as a vehicle violates a predefined rule. An immediate notification will be sent to the operator via alert pop-up in online platform/email/sms , depending upon the kind of alert.

- SOS
- Over speed
- Harsh Braking
- Fence IN/OUT
- etc..



## Intelligent Speed Limitation (Optional)

Speed limiter combined with Track-Car system can automatically control vehicle speed in different speed limit areas. This functionality is useful in restricted areas like airports, mining fields, petroleum fields where speed limit is lesser than the normal speed limit.



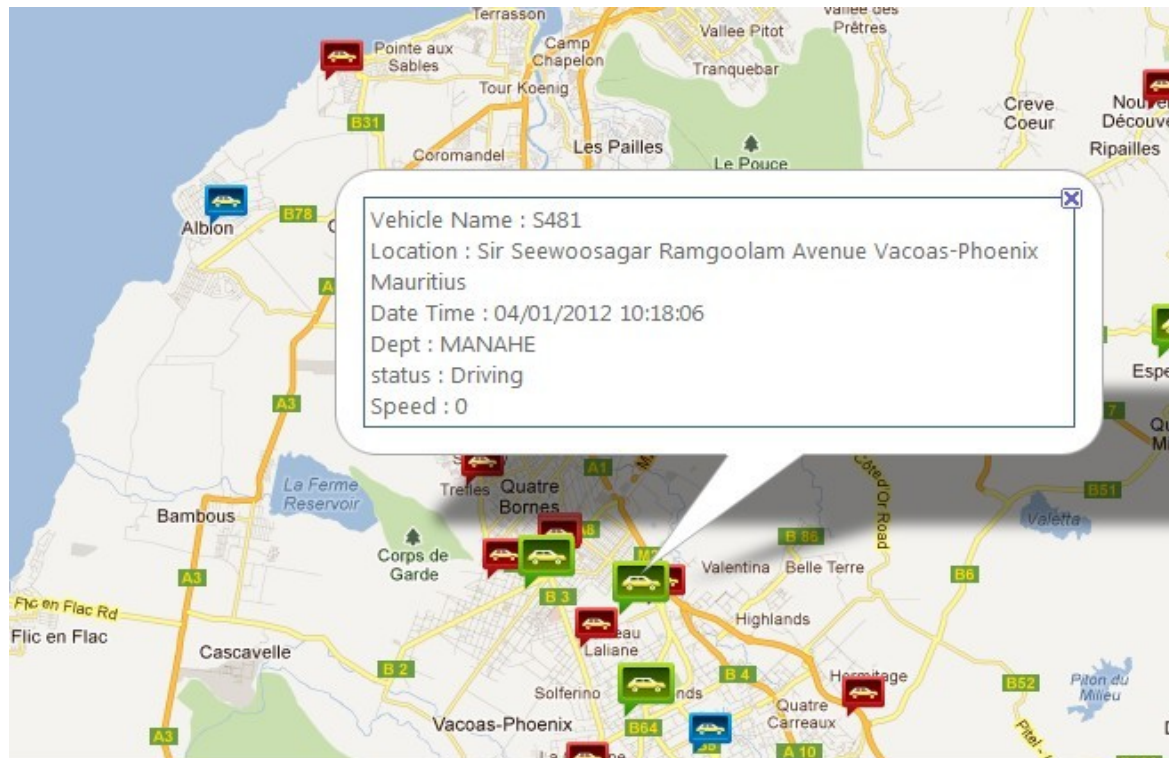
## Remote switch OFF facility

In an unfortunate event of vehicle theft, customer can use the remote switch-off facility to turn off the engine of the vehicle by sending an SMS from an authorized mobile phone or from online platform.



## Real-time Tracking

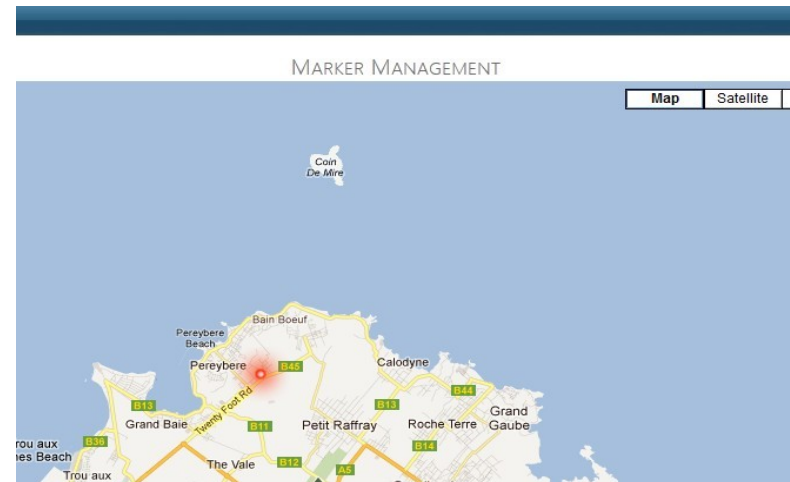
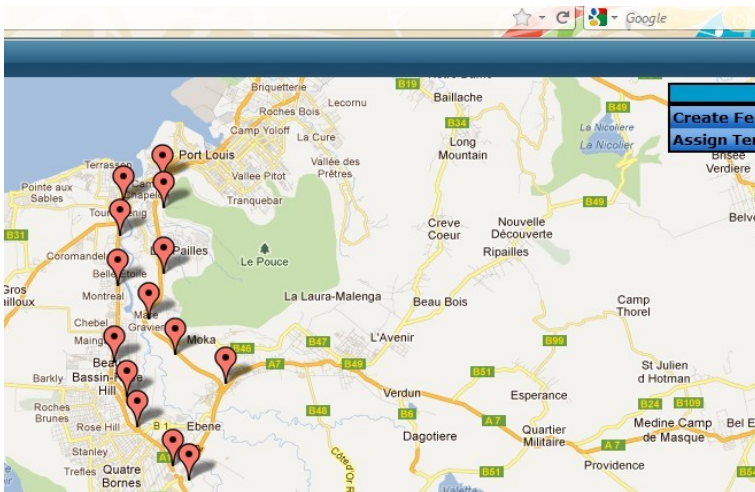
Users can track their vehicles in real-time using Track-Car's online platform. The various status of vehicles are indicated with three different icons. I.e. **Green Icon for Running**, **Blue for parking** and **Red for offline**.



## FENCE & Waypoint Creation

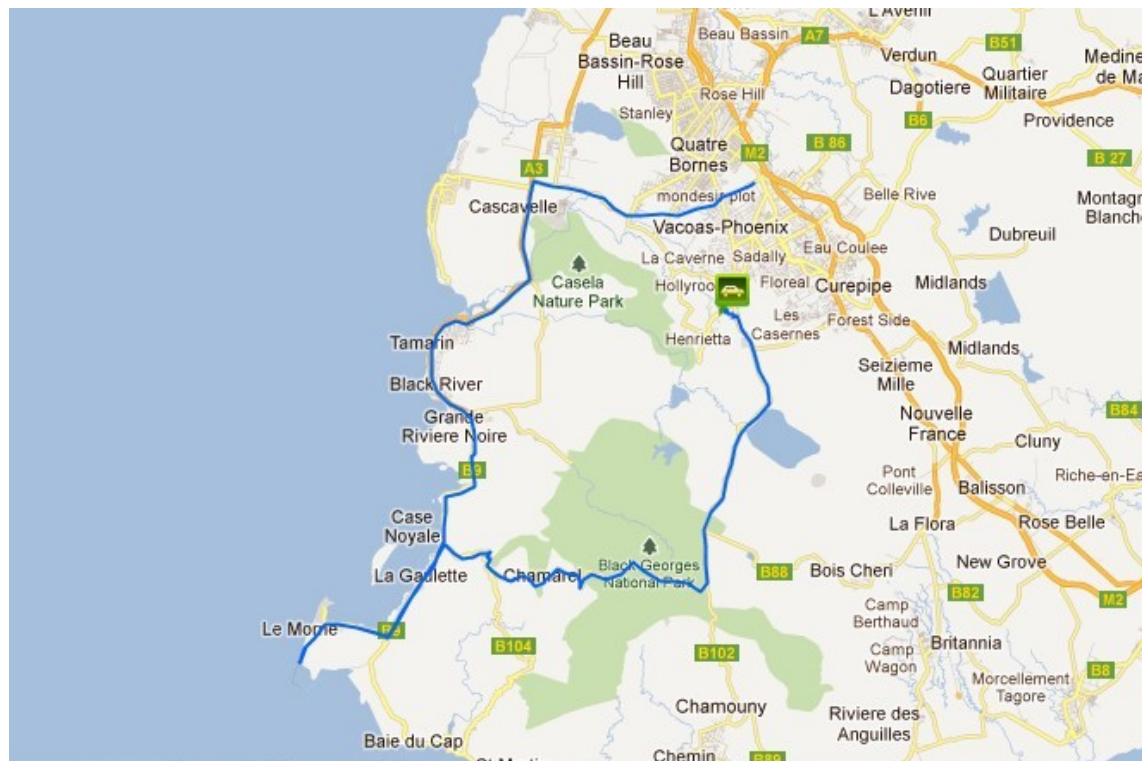
Users can create **Fenced areas** where restricted movement of vehicle is required. As per the criteria device sends alerts/sms and create movement reports.

**Way points** are known points like shops, bus stops, petrol pump, etc which can be marked for report generation.



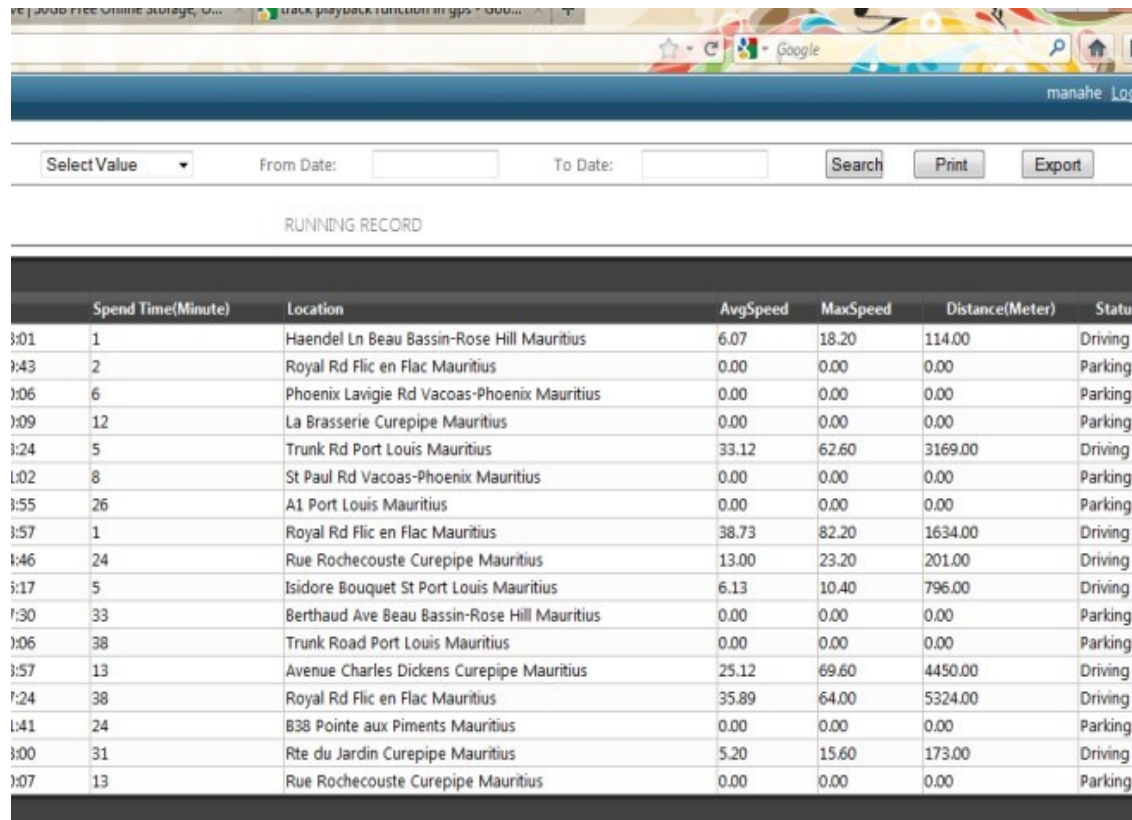
## Track Playback

Running history of the vehicle for a specified period of time can be animated using the track play back function. The vehicle will move through the track drawn over its completed route in the map.



## Reports

Customized reports can be generated and printed according to the requirements of users. Reports include **Daily Running Report, Over speed report, Way point report...etc..**



The screenshot shows a web browser window with a search interface for a 'RUNNING RECORD'. The interface includes a dropdown menu for 'Select Value', input fields for 'From Date' and 'To Date', and buttons for 'Search', 'Print', and 'Export'. Below the search area is a table with the following data:

Spend Time(Minute)	Location	AvgSpeed	MaxSpeed	Distance(Meter)	Status	
:01	1	Haendel Ln Beau Bassin-Rose Hill Mauritius	6.07	18.20	114.00	Driving
:43	2	Royal Rd Flic en Flac Mauritius	0.00	0.00	0.00	Parking
:06	6	Phoenix Lavigie Rd Vacoas-Phoenix Mauritius	0.00	0.00	0.00	Parking
:09	12	La Brasserie Curepipe Mauritius	0.00	0.00	0.00	Parking
:24	5	Trunk Rd Port Louis Mauritius	33.12	62.60	3169.00	Driving
:02	8	St Paul Rd Vacoas-Phoenix Mauritius	0.00	0.00	0.00	Parking
:55	26	A1 Port Louis Mauritius	0.00	0.00	0.00	Parking
:57	1	Royal Rd Flic en Flac Mauritius	38.73	82.20	1634.00	Driving
:46	24	Rue Rochecouste Curepipe Mauritius	13.00	23.20	201.00	Driving
:17	5	Isidore Bouquet St Port Louis Mauritius	6.13	10.40	796.00	Driving
:30	33	Berthaud Ave Beau Bassin-Rose Hill Mauritius	0.00	0.00	0.00	Parking
:06	38	Trunk Road Port Louis Mauritius	0.00	0.00	0.00	Parking
:57	13	Avenue Charles Dickens Curepipe Mauritius	25.12	69.60	4450.00	Driving
:24	38	Royal Rd Flic en Flac Mauritius	35.89	64.00	5324.00	Driving
:41	24	B38 Pointe aux Piments Mauritius	0.00	0.00	0.00	Parking
:00	31	Rte du Jardin Curepipe Mauritius	5.20	15.60	173.00	Driving
:07	13	Rue Rochecouste Curepipe Mauritius	0.00	0.00	0.00	Parking

## Detailing of Reports

Clicking on individual lines in the report will open up a new window with elaborated view of vehicle movement. Clicking on vehicle icons in the new window shows more details.

The screenshot shows a web application interface for vehicle tracking. At the top, there's a navigation bar with 'Reports' and 'About' tabs. Below it, a search bar and a 'To Date:' field are visible. The main content area is split into two parts: a map on the left and a data table on the right. The map shows a city area with several red car icons. A pop-up window is open over one of these icons, displaying the following details:

- Vehicle Name : 3849JU08
- Location : M2 Quatre Bornes Mauritius
- Date & Time : 04/01/2012 10:04:25
- Status : Driving
- Speed : 97.0000000000

The data table on the right has a header with 'AvgSpeed' and contains the following rows:

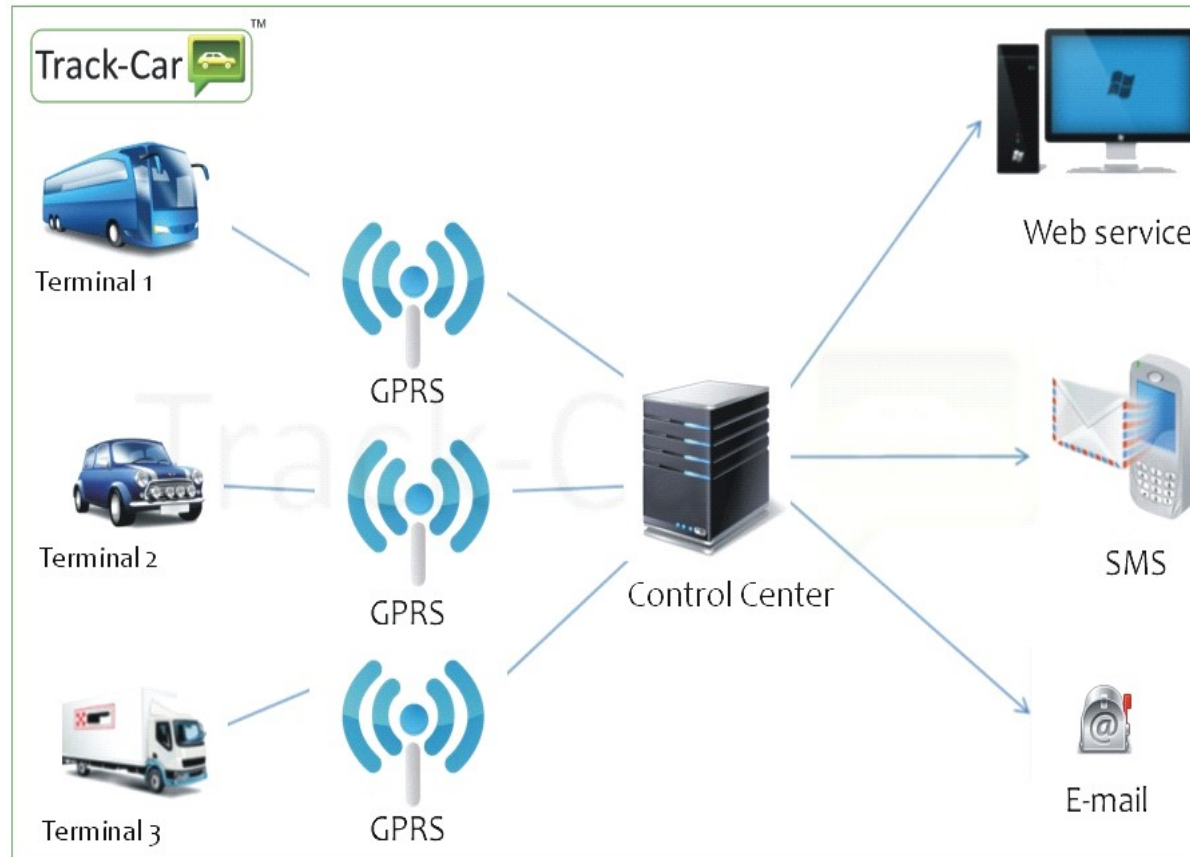
	AvgSpeed
ritius	26.48
uritiuis	0.00
Avenue Vacoas-Phoenix Mauritius	14.53
uritiuis	0.00
tre Bornes Mauritius	0.00
ssin-Rose Hill Mauritius	0.00
uritiuis	9.60
uritiuis	0.00
ssin-Rose Hill Mauritius	21.90
uritiuis	4.80
	9.89
nes Mauritius	66.23
uritiuis	0.00
	0.00
as-Phoenix Mauritius	24.11
	0.00

At the bottom of the table, there are some additional rows with columns for time and location:

09:46:37	04/01/2012 10:04:24	10	M2 Quatre Bornes Mauritius	0.00
09:42:18	04/01/2012 11:32:04	110	Dr S Jhuboo St Beau Bassin-Rose Hill Mauritius	0.00

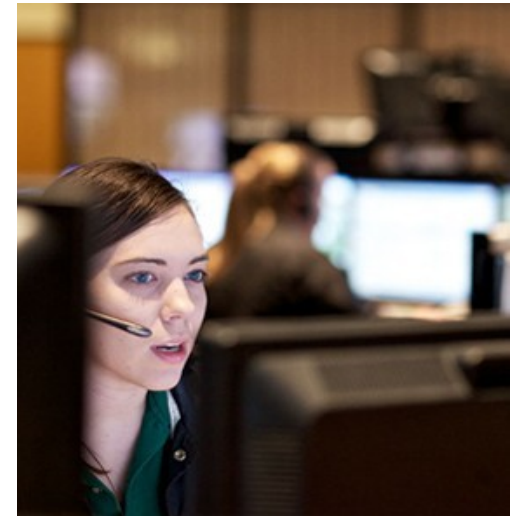


## Monitoring Service Platform



## Monitoring Service Platform (continued)

- State Of The Art, Central Command Control Center in Bangalore, India
- This center can be accessed through Phone, Web Chat, Email and SMS
- Detailed reports and analysis as per your requirement.
- 24x7 monitoring of all vehicles
- Access of real-time monitoring screen to designated personnel.



To support the operations of our customer, Track-Car provides the best suitable web based management solution with which the transport manager will be able to analyze the data and take critical decisions in minimum time. The Fleet monitoring Operation management service will increase the productivity, minimize the response time, and enhance the revenue earning.

THANK YOU...